

ACCOMMODATION

STUDENT DORMS OF SECONDARY SCHOOL STUDENTS

ADDRESS: Zdravka Čelara, Beograd 11000

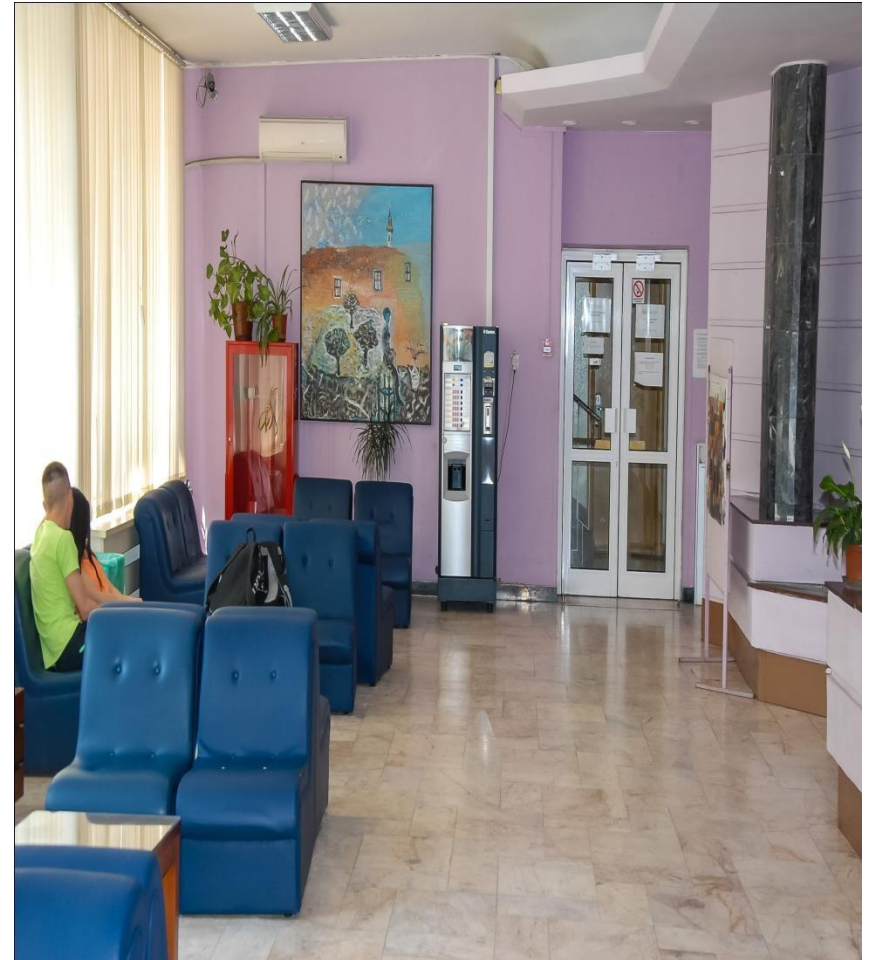


Location: in the city center separate complex

The Student Dorm is located in an excellent location, in the wider center of Belgrade, on the territory of the municipality of Palilula, in the immediate vicinity of the Aleksandar Nikolić Sports Hall (Pionir Hall), the Radivoj Korać Basketball Hall, the Tašmajdan Sports Center and the Vlada Divljan Culture Center. It is 1.6 km (about a 20-minute walk) from the National Assembly, 1.8 km (about a 20-minute walk) from Skadarlija, 2.1 km (about a 25-minute walk) from Knez Mihailova Street, and 2.9 km (about a 30-minute walk) from Kalemegdan. At a distance of up to 3 km (about a 30-minute walk) there are also most important museums, theaters and galleries, while in the area of Skadarlija and Knez Mihailova streets there is the largest range of catering facilities.

Public transport in Belgrade is free for all users,

Reception



Rooms



Accommodation is in double and triple rooms.



RESTAURANT



The diet is adapted to all the requirements of the participants.
Which must be specified in the application form.



Student club for a free time



Working hall



Recreation - swimming pool



Recreation - fitness club



Recreation - sport hall and table tennis



In circle of dorms high school building
is available for any use



Complex has:



Complex has free:



ZONE